

# TOKYO FORWARD CALENDAR 2022

2021年、2度目のオリンピック、パラリンピック。TOKYOは2020大会のレガシーを発展させ、前に進みます。

In 2021, Tokyo hosted the Olympic and Paralympic Games for the second time.

Tokyo will continue to move forward while developing the legacy of initiatives implemented for the Games.



東京都



TOKYO 2020 メダル

**5000**個

世界初！  
みんなの使用済み携帯電話がメダルに

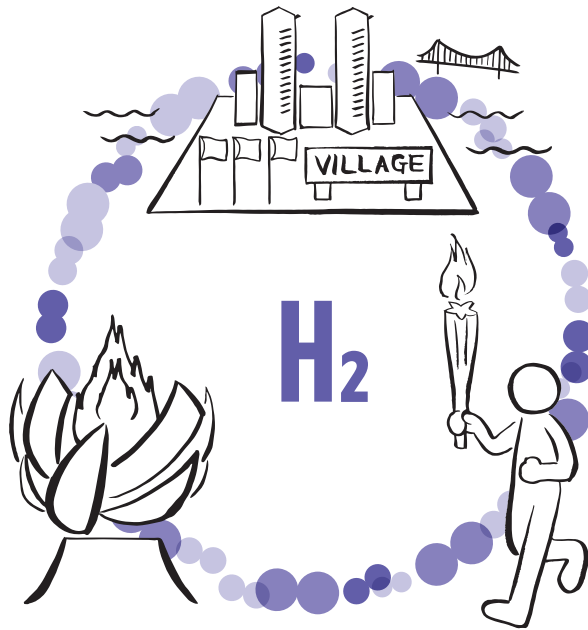
A world first!  
Recycled cell phones turned into medals

# 1

## JANUARY

2022

| SUN       | MON               | TUE       | WED       | THU       | FRI       | SAT            |
|-----------|-------------------|-----------|-----------|-----------|-----------|----------------|
|           |                   |           |           |           |           | <b>1</b><br>元日 |
| <b>2</b>  | <b>3</b>          | <b>4</b>  | <b>5</b>  | <b>6</b>  | <b>7</b>  | <b>8</b>       |
| <b>9</b>  | <b>10</b><br>成人の日 | <b>11</b> | <b>12</b> | <b>13</b> | <b>14</b> | <b>15</b>      |
| <b>16</b> | <b>17</b>         | <b>18</b> | <b>19</b> | <b>20</b> | <b>21</b> | <b>22</b>      |
| <b>23</b> | <b>24</b>         | <b>25</b> | <b>26</b> | <b>27</b> | <b>28</b> | <b>29</b>      |
| <b>30</b> | <b>31</b>         |           |           |           |           |                |



東京2020大会で福島産の水素を使用

Use H<sub>2</sub> produced in Fukushima Prefecture  
at the Tokyo 2020 Games

# 2 FEBRUARY 2022

| SUN | MON | TUE | WED         | THU | FRI          | SAT |
|-----|-----|-----|-------------|-----|--------------|-----|
|     |     | 1   | 2           | 3   | 4            | 5   |
| 6   | 7   | 8   | 9           | 10  | 11<br>建国記念の日 | 12  |
| 13  | 14  | 15  | 16          | 17  | 18           | 19  |
| 20  | 21  | 22  | 23<br>天皇誕生日 | 24  | 25           | 26  |
| 27  | 28  |     |             |     |              |     |

**TOKYO 2020**  
**#ARIGATO**

東京2020大会は、困難な状況の中、  
 多くの方々に支えていただき、開催することができました。  
 大会に関係する全ての方々に心より感謝を申し上げます。  
 ありがとうございました。

Thanks to the support of many people, we were able to  
 successfully deliver the Tokyo 2020 Games despite the  
 difficult circumstances. We would like to express our heartfelt  
 gratitude to all those involved in the Games. Arigato!

# 3

## MARCH

2022

| SUN | MON        | TUE | WED | THU | FRI | SAT |
|-----|------------|-----|-----|-----|-----|-----|
|     |            | 1   | 2   | 3   | 4   | 5   |
| 6   | 7          | 8   | 9   | 10  | 11  | 12  |
| 13  | 14         | 15  | 16  | 17  | 18  | 19  |
| 20  | 21<br>春分の日 | 22  | 23  | 24  | 25  | 26  |
| 27  | 28         | 29  | 30  | 31  |     |     |



東京2020大会  
開閉会式の4日間

**72**万t  
オフセット

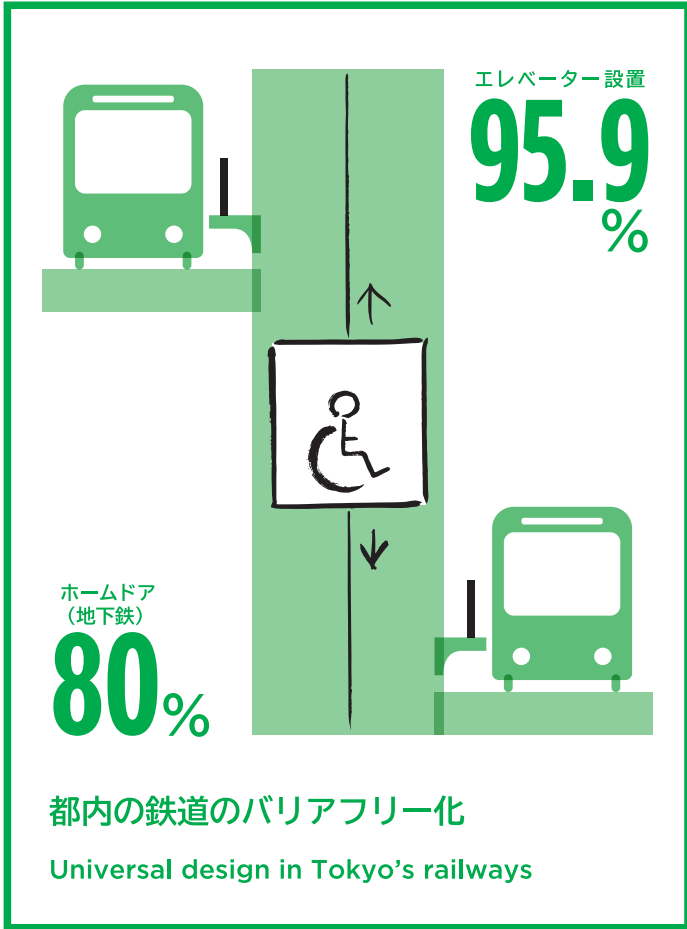


## 都内CO<sub>2</sub>排出量実質ゼロ実現

Offsetting all CO<sub>2</sub> emissions in Tokyo  
during the four days of the Tokyo 2020  
Games' ceremonies

**4**  
**APRIL**  
2022

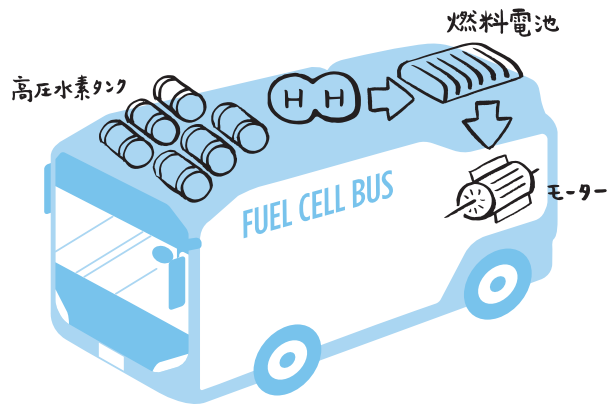
| SUN | MON | TUE | WED | THU | FRI        | SAT |
|-----|-----|-----|-----|-----|------------|-----|
|     |     |     |     |     | 1          | 2   |
| 3   | 4   | 5   | 6   | 7   | 8          | 9   |
| 10  | 11  | 12  | 13  | 14  | 15         | 16  |
| 17  | 18  | 19  | 20  | 21  | 22         | 23  |
| 24  | 25  | 26  | 27  | 28  | 29<br>昭和の日 | 30  |



5  
MAY  
2022

| SUN | MON | TUE        | WED        | THU        | FRI | SAT |
|-----|-----|------------|------------|------------|-----|-----|
| 1   | 2   | 3<br>憲法記念日 | 4<br>みどりの日 | 5<br>こどもの日 | 6   | 7   |
| 8   | 9   | 10         | 11         | 12         | 13  | 14  |
| 15  | 16  | 17         | 18         | 19         | 20  | 21  |
| 22  | 23  | 24         | 25         | 26         | 27  | 28  |
| 29  | 30  | 31         |            |            |     |     |

# 2030 Carbon Half

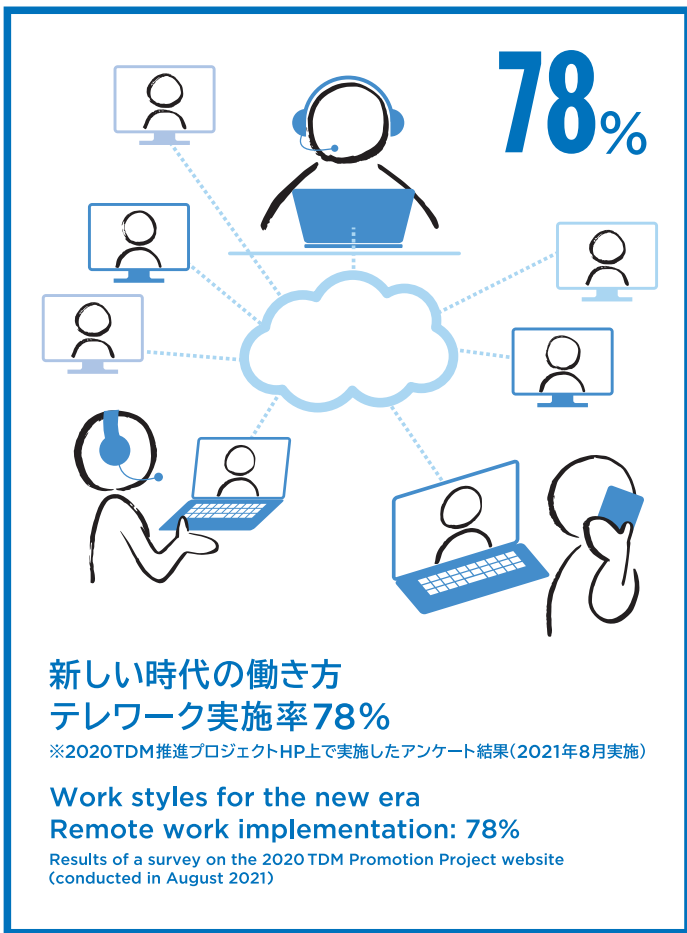


乗用車新車販売  
100%非ガソリン化 (2030年)

Make all new vehicles on sale  
non-gasoline powered (2030)

6  
JUNE  
2022

| SUN | MON | TUE | WED | THU | FRI | SAT |
|-----|-----|-----|-----|-----|-----|-----|
|     |     |     | 1   | 2   | 3   | 4   |
| 5   | 6   | 7   | 8   | 9   | 10  | 11  |
| 12  | 13  | 14  | 15  | 16  | 17  | 18  |
| 19  | 20  | 21  | 22  | 23  | 24  | 25  |
| 26  | 27  | 28  | 29  | 30  |     |     |

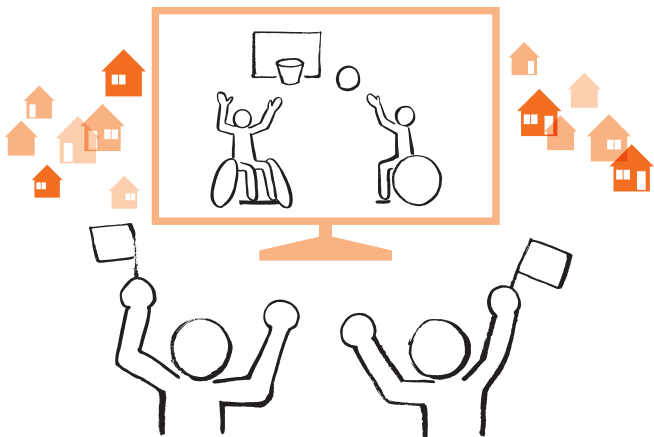


**7**  
**JULY**  
2022

| SUN | MON       | TUE | WED | THU | FRI | SAT |
|-----|-----------|-----|-----|-----|-----|-----|
|     |           |     |     |     | 1   | 2   |
| 3   | 4         | 5   | 6   | 7   | 8   | 9   |
| 10  | 11        | 12  | 13  | 14  | 15  | 16  |
| 17  | 18<br>海の日 | 19  | 20  | 21  | 22  | 23  |
| 24  | 25        | 26  | 27  | 28  | 29  | 30  |
| 31  |           |     |     |     |     |     |



# 70%



東京パラリンピックが  
開催されて「よかった」

(共同通信世論調査69.8%)

People are “glad” that the  
Tokyo Paralympic Games was held

Kyodo News survey: 69.8%

# 8 AUGUST

2022

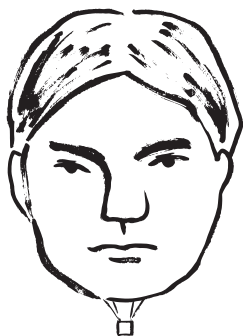
| SUN | MON | TUE | WED | THU       | FRI | SAT |
|-----|-----|-----|-----|-----------|-----|-----|
|     | 1   | 2   | 3   | 4         | 5   | 6   |
| 7   | 8   | 9   | 10  | 11<br>山の日 | 12  | 13  |
| 14  | 15  | 16  | 17  | 18        | 19  | 20  |
| 21  | 22  | 23  | 24  | 25        | 26  | 27  |
| 28  | 29  | 30  | 31  |           |     |     |

TokyoTokyo  
FESTIVAL

スペシャル **13** 企画を実施

**2436**

国内外からの応募

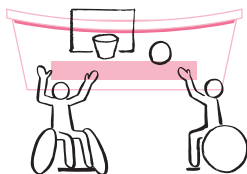
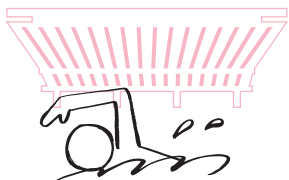


コロナ禍でも文化の灯を絶やさない

Keeping culture alive even  
during the pandemic

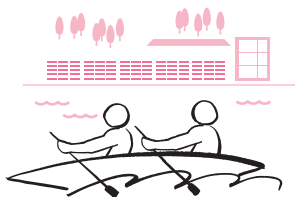
**9**  
**SEPTEMBER**  
2022

| SUN | MON        | TUE | WED | THU | FRI        | SAT |
|-----|------------|-----|-----|-----|------------|-----|
|     |            |     |     | 1   | 2          | 3   |
| 4   | 5          | 6   | 7   | 8   | 9          | 10  |
| 11  | 12         | 13  | 14  | 15  | 16         | 17  |
| 18  | 19<br>敬老の日 | 20  | 21  | 22  | 23<br>秋分の日 | 24  |
| 25  | 26         | 27  | 28  | 29  | 30         |     |



新規

6施設+α



感動を生んだ競技会場を  
都民が集う拠点に!

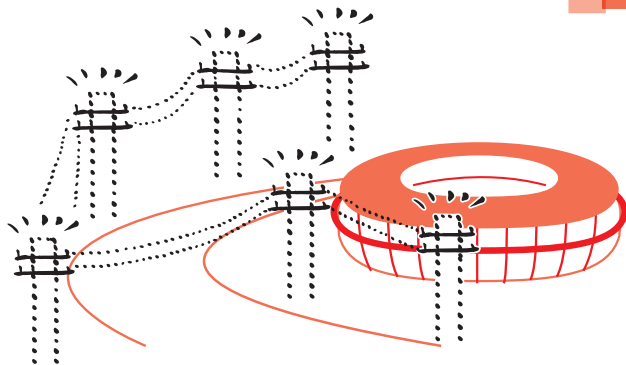
Turn the venues that created such excitement,  
passion, and inspiration into centers gathering  
the people of Tokyo!

10  
OCTOBER  
2022

| SUN | MON          | TUE | WED | THU | FRI | SAT |
|-----|--------------|-----|-----|-----|-----|-----|
|     |              |     |     |     |     | 1   |
| 2   | 3            | 4   | 5   | 6   | 7   | 8   |
| 9   | 10<br>スポーツの日 | 11  | 12  | 13  | 14  | 15  |
| 16  | 17           | 18  | 19  | 20  | 21  | 22  |
| 23  | 24           | 25  | 26  | 27  | 28  | 29  |
| 30  | 31           |     |     |     |     |     |

無電柱化

99%



センター・コア・エリア内の都道の  
無電柱化 99%

Removal of utility poles along metropolitan  
routes in the Center Core Area 99%

11  
NOVEMBER  
2022

| SUN | MON | TUE | WED          | THU       | FRI | SAT |
|-----|-----|-----|--------------|-----------|-----|-----|
|     |     | 1   | 2            | 3<br>文化の日 | 4   | 5   |
| 6   | 7   | 8   | 9            | 10        | 11  | 12  |
| 13  | 14  | 15  | 16           | 17        | 18  | 19  |
| 20  | 21  | 22  | 23<br>勤労感謝の日 | 24        | 25  | 26  |
| 27  | 28  | 29  | 30           |           |     |     |

活動に満足  
**80%**  
(シティキャストアンケートより)

ボランティアマインドの広がり  
Fostered a volunteer mindset

# 12

## DECEMBER

2022

| SUN | MON | TUE | WED | THU | FRI | SAT |
|-----|-----|-----|-----|-----|-----|-----|
|     |     |     |     | 1   | 2   | 3   |
| 4   | 5   | 6   | 7   | 8   | 9   | 10  |
| 11  | 12  | 13  | 14  | 15  | 16  | 17  |
| 18  | 19  | 20  | 21  | 22  | 23  | 24  |
| 25  | 26  | 27  | 28  | 29  | 30  | 31  |