



# Taipei City, Taiwan

2013.10.15



# Outline

- ▶ Overview of Taipei City's traffic problem
- ▶ Major challenges & responses
- ▶ Installation State
- ▶ Operation problems & future prospects

# Outline of Taipei City

- Population:
  - 2.68 million
- Area:
  - 272 km<sup>2</sup>
- Living Density:
  - 9,860 person/km<sup>2</sup>
- Road Area:
  - 20.91 million m<sup>2</sup>



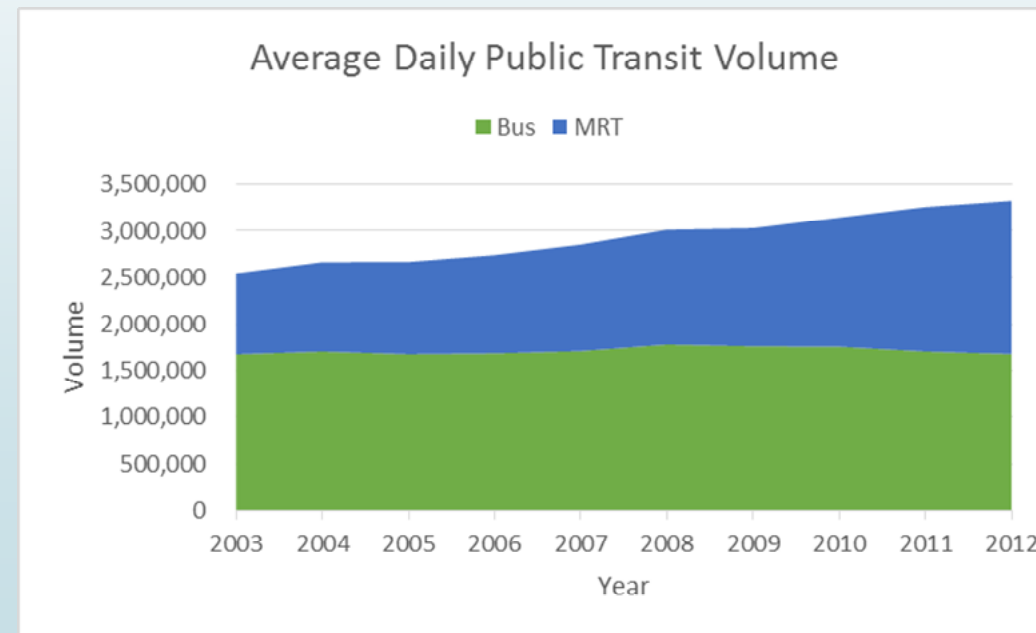
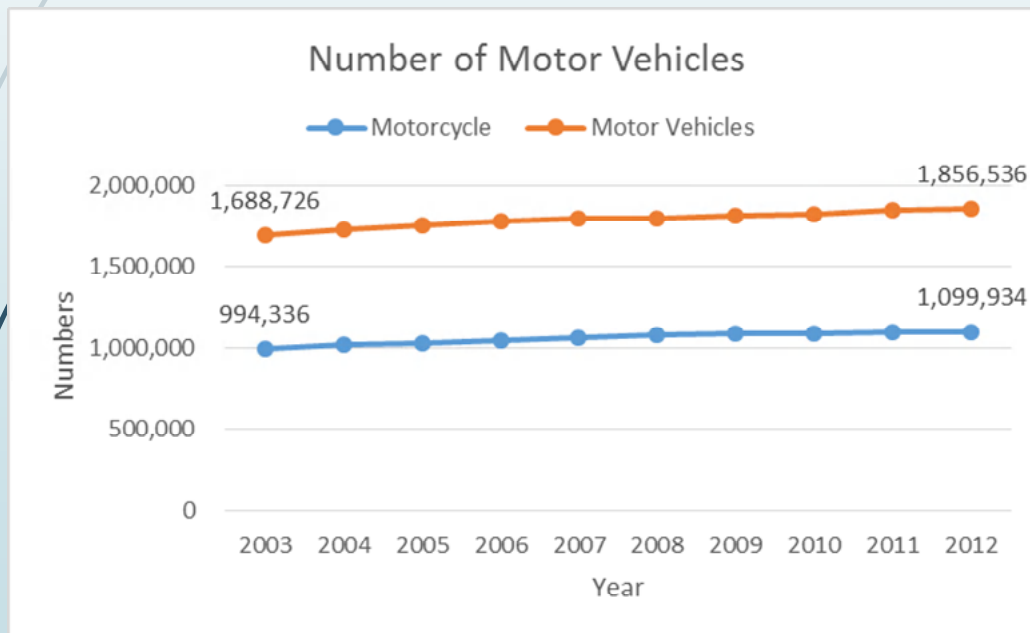
# Outline of Taipei City

- ▶ Traffic Characteristic in Taipei
- ▶ Daily Trip
  - ▶ 7 million trips/day
- ▶ Modal Split

<b>Modal</b>	<b>Rate</b>
motorization	42%
public transit	38%
walk	14.5%
bicycle	5.5%

# Outline of Taipei City

## ► Traffic Characteristic in Taipei





# Taipei City's traffic problem

- ▶ Living Density are so high
- ▶ Roads are small
- ▶ Too many motorization
- ▶ Rule violation



# Major challenges & responses

- ▶ Fuel price is relatively cheap
  - ▶ Hard to lower motorization rate
  - ▶ Try to normalize the fuel price
- ▶ Rule violation
  - ▶ Raise the consciousness of traffic rule

# ITS development in Taipei



Traffic monitoring system

CMS: 149, VD: 699, CCTV: 260



Parking lot guidance system

Display LED: 129

CMS · QR-Code car-finding service



Bus information system

Onboard Devices: 4,100, Intelligent bus stop: 779

5284( "I love bus" ) Website · Phone Inquiry

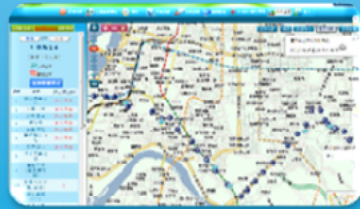


Multi-use of Easycard

- Senior Citizen & Handicapped Taxi Service
- YouBike



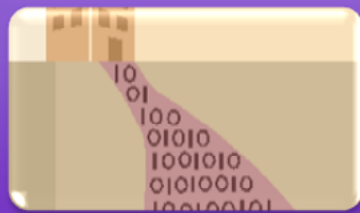
# ITS development in Taipei



Taipei City ATIS Web  
various kinds of traffic information



Fun Travel in Taipei  
various kinds of traffic information



Traffic Information Database  
Open Data



Low Floor Bus & Audible Signal  
VIPs



# Operation problems

- ▶ What's hard...
- ▶ Try to normalize the fuel price
  - ▶ Democracy is the problem...
  - ▶ There are too many irrational & absurd politician and people...

# Future prospects

- Build an intelligent city

