

Taipei City Traffic Profile: Public Transit

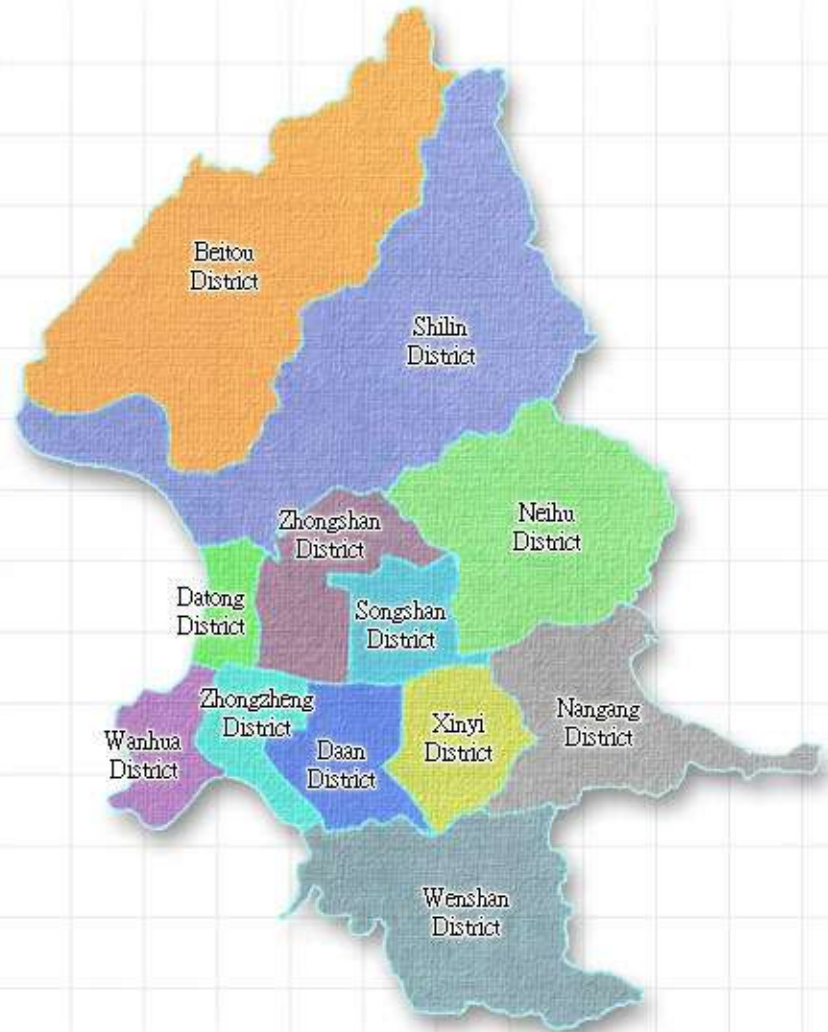
Department of Transportation, Taipei City

July 11 ,2011

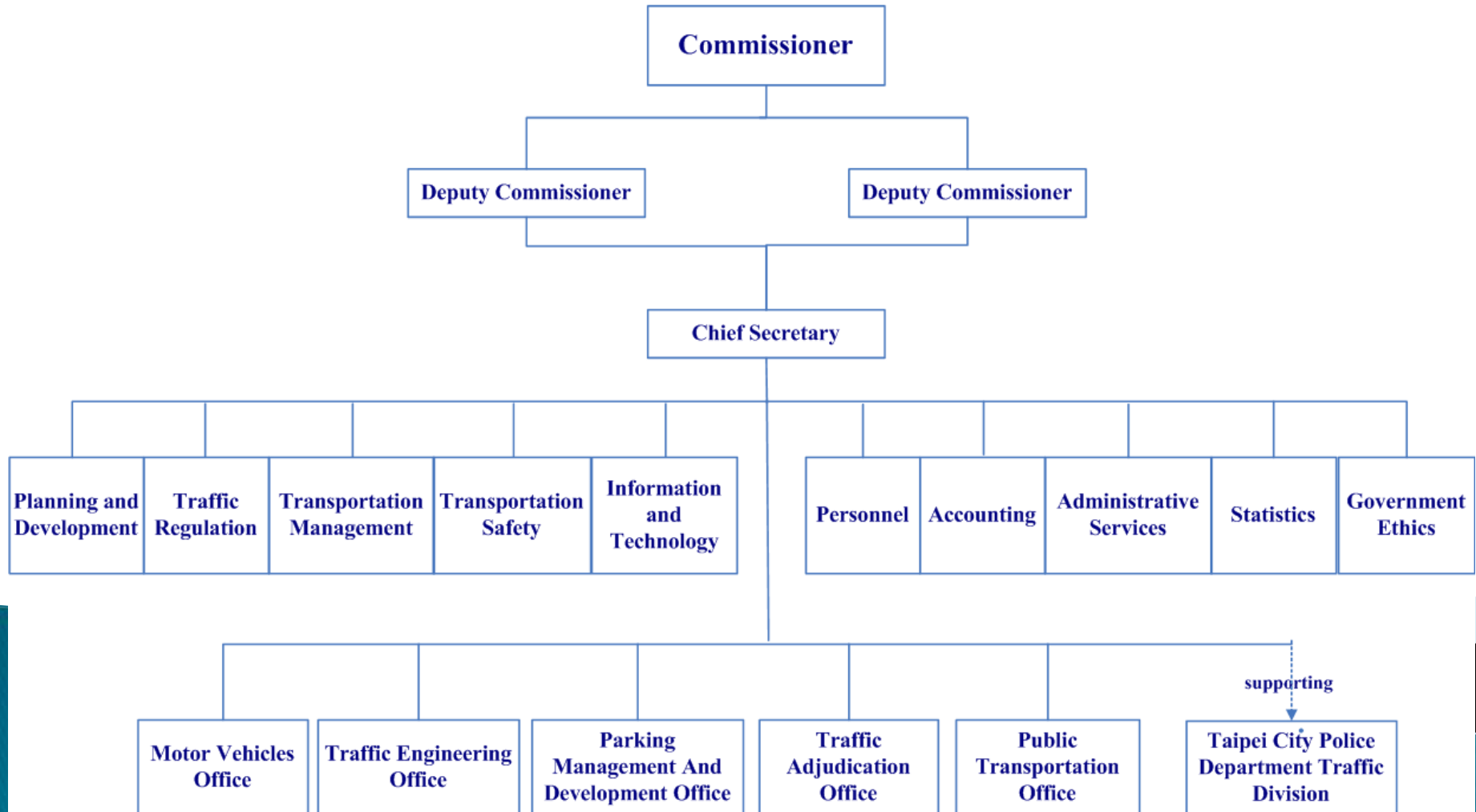


Social & Economic Characteristics

- ▶ Population:
2.618million
- ▶ Area:
272km²
- ▶ Road Area:
20,909,292m²
- ▶ Living Density:
9,635persons/km²

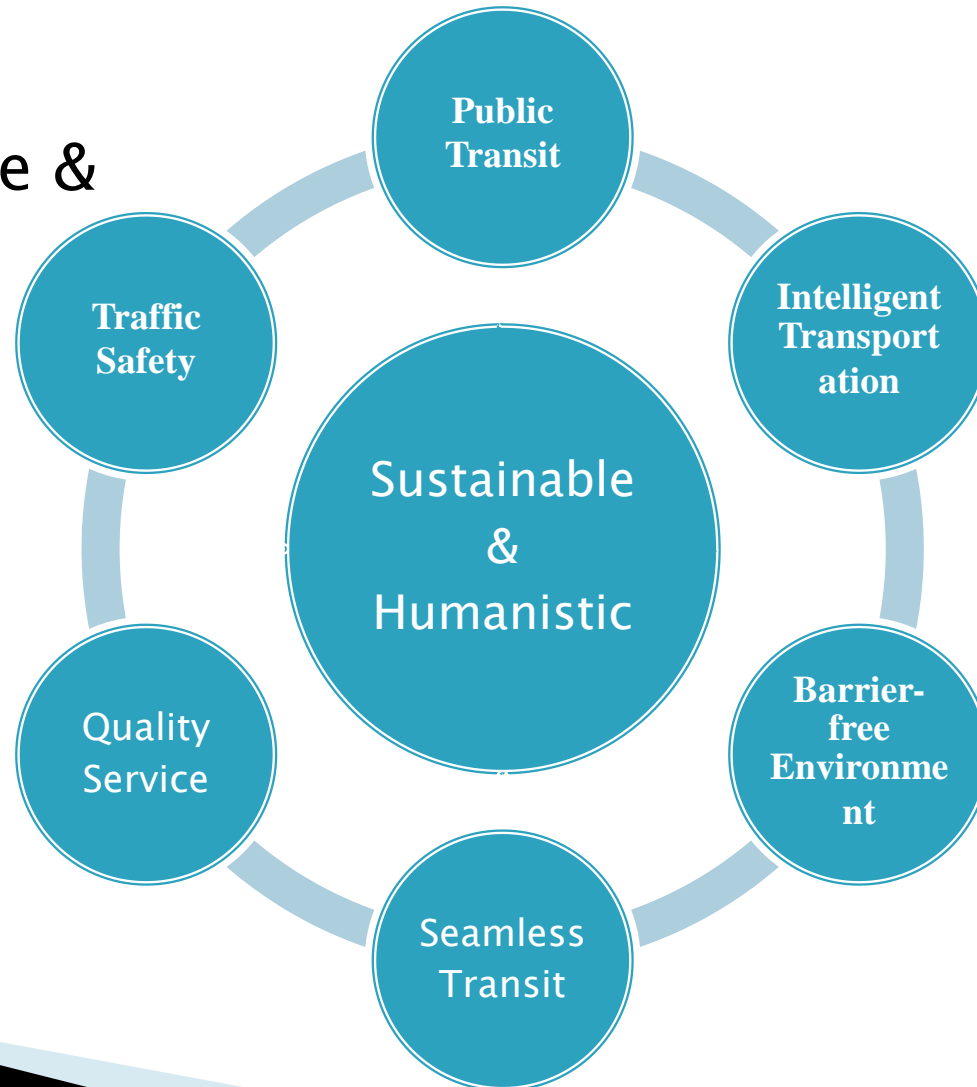


Organizational Chart



The Ideal City Transportation

Perspective &
Goal

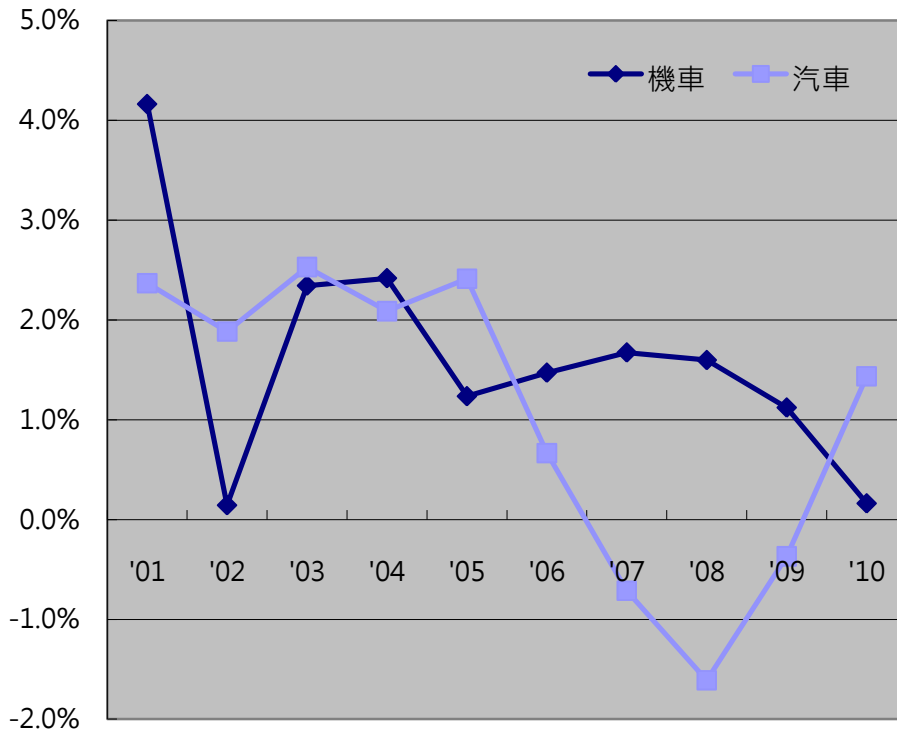


Traffic Characteristic (1)

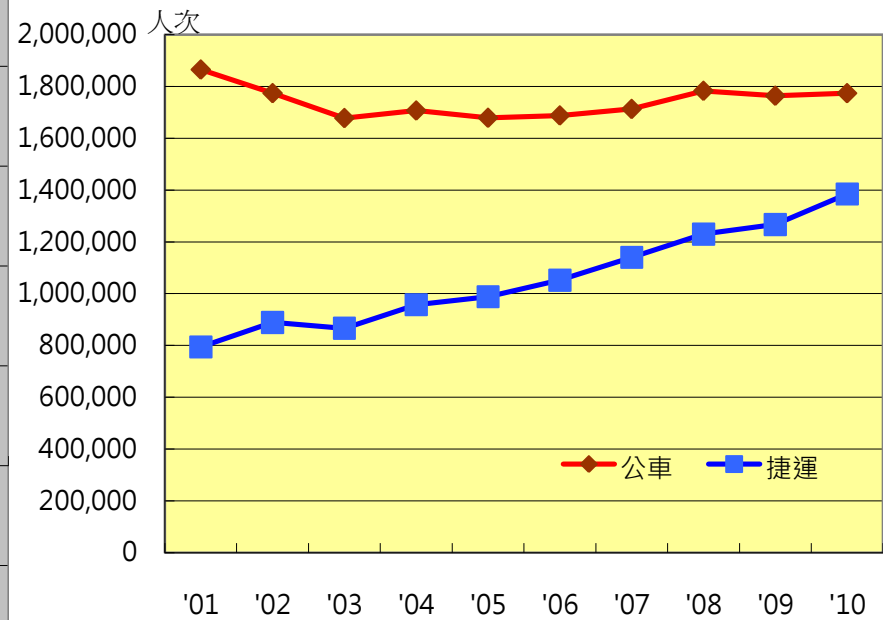
Modal Split for Commuter Trips, 2010

modal	Rate
motorization	50.9%
public transit	37.6%
walk	5.7%
bicycle	3.6%
other	2.2%

Traffic Characteristic(2)

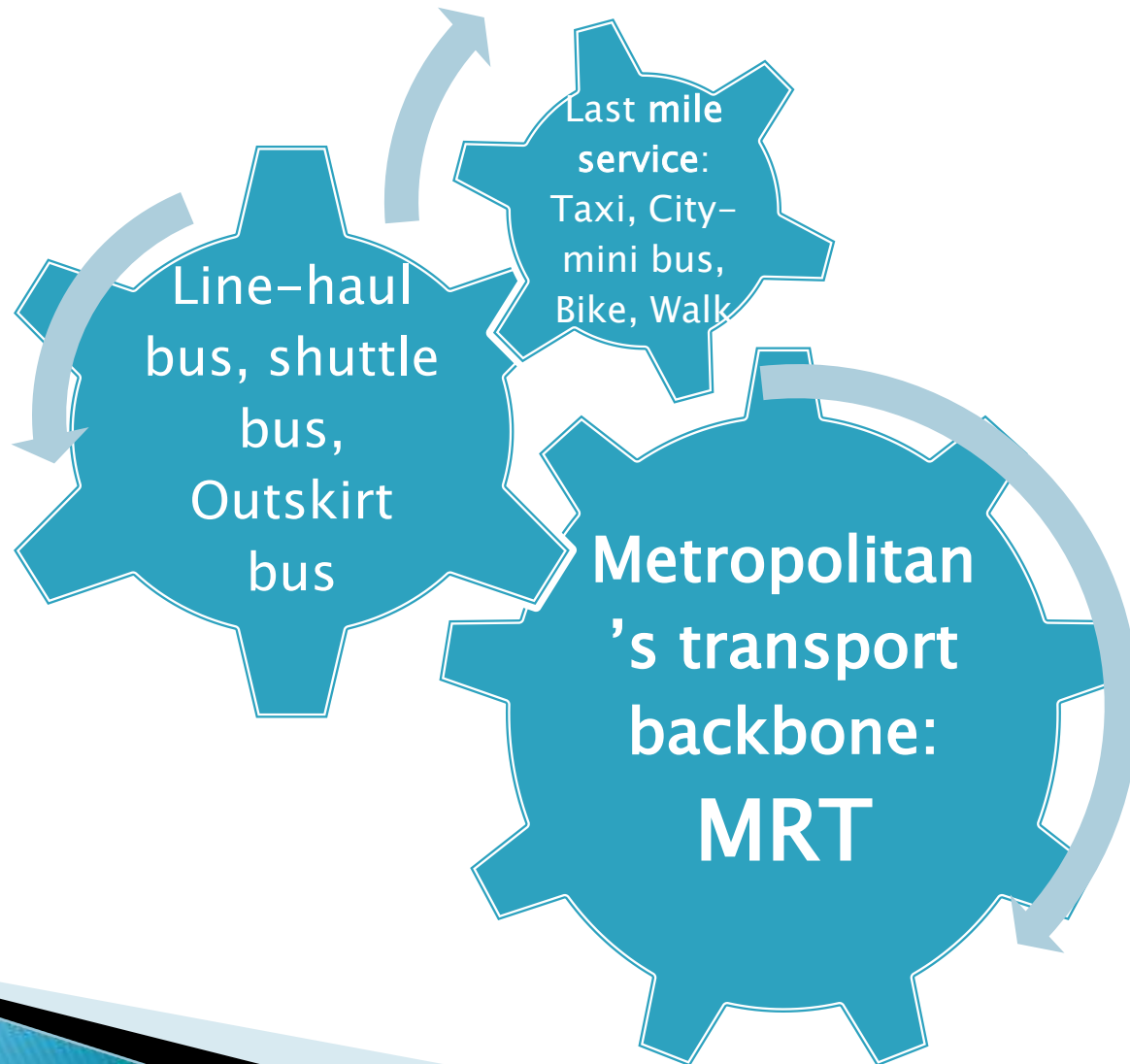


The growth of automobiles and motorcycles (from 2001~2010)



Average daily public transit volume (from 2001~2010)

Public transit system in Taipei



Taipei Mass Rapid Transit (MRT) System

- ▶ The construction and operation are responsible by the different department
 - Construction: Department of Rapid Transit Systems
 - Department established in 1986
 - MRT construction from 1988
 - Operation: Taipei Rapid Transit Corporation
 - Preparatory office established in 1990
 - Corporation established on July 29, 1994
 - Start to operate for business on Mar. 28, 1996

MRT Network(1)

- The implementation of the Taipei MRT can be assessed in 3 stages, as follows:
 - Stage 1: Completion of most of the initial network and substantial upgrading of service capacity on the Taipei MRT (Carried out in the past 20 years)
 - Stage 2: Applying for further budgets and continuing the construction of approved MRT lines.
 - Stage 3: Continuous planning and construction of an extended MRT network.



MRT System Characteristic

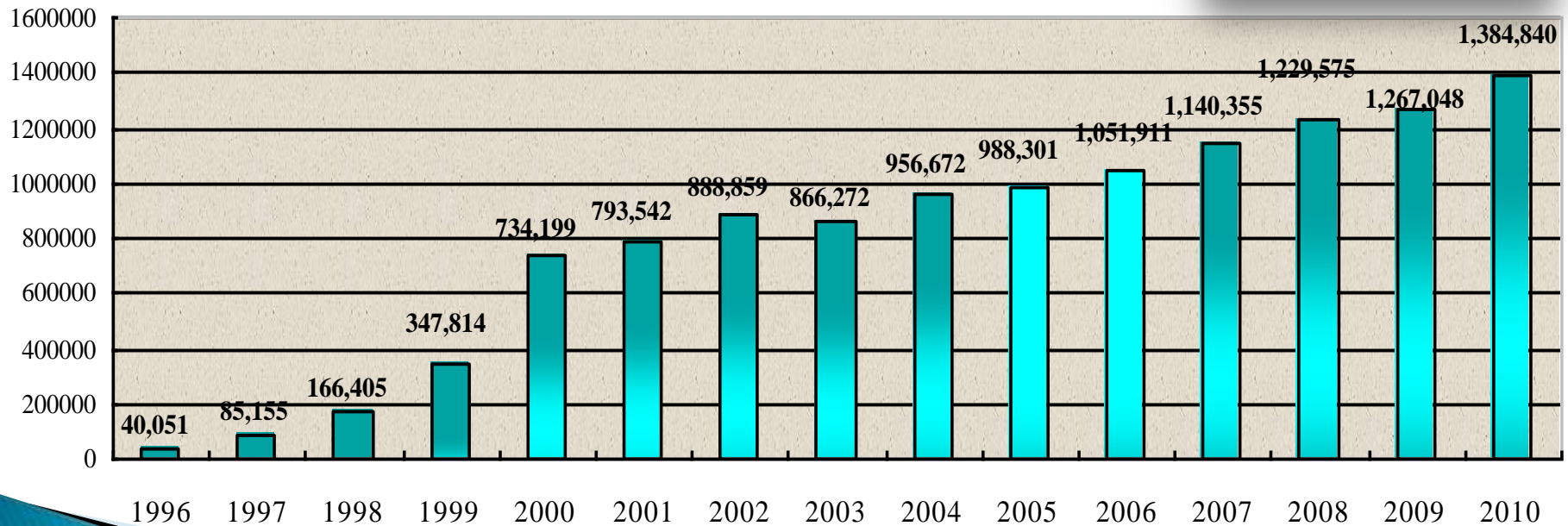
System	cars/train	volume (person/train)	speed (km/hr)	Type of running
High-Capacity System Ex: Danshui line	6	2,200	80	driver , ATC
Medium-Capacity Ex: Wenhui line	4	424	80	No driver Control by CTC

MRT daily volume

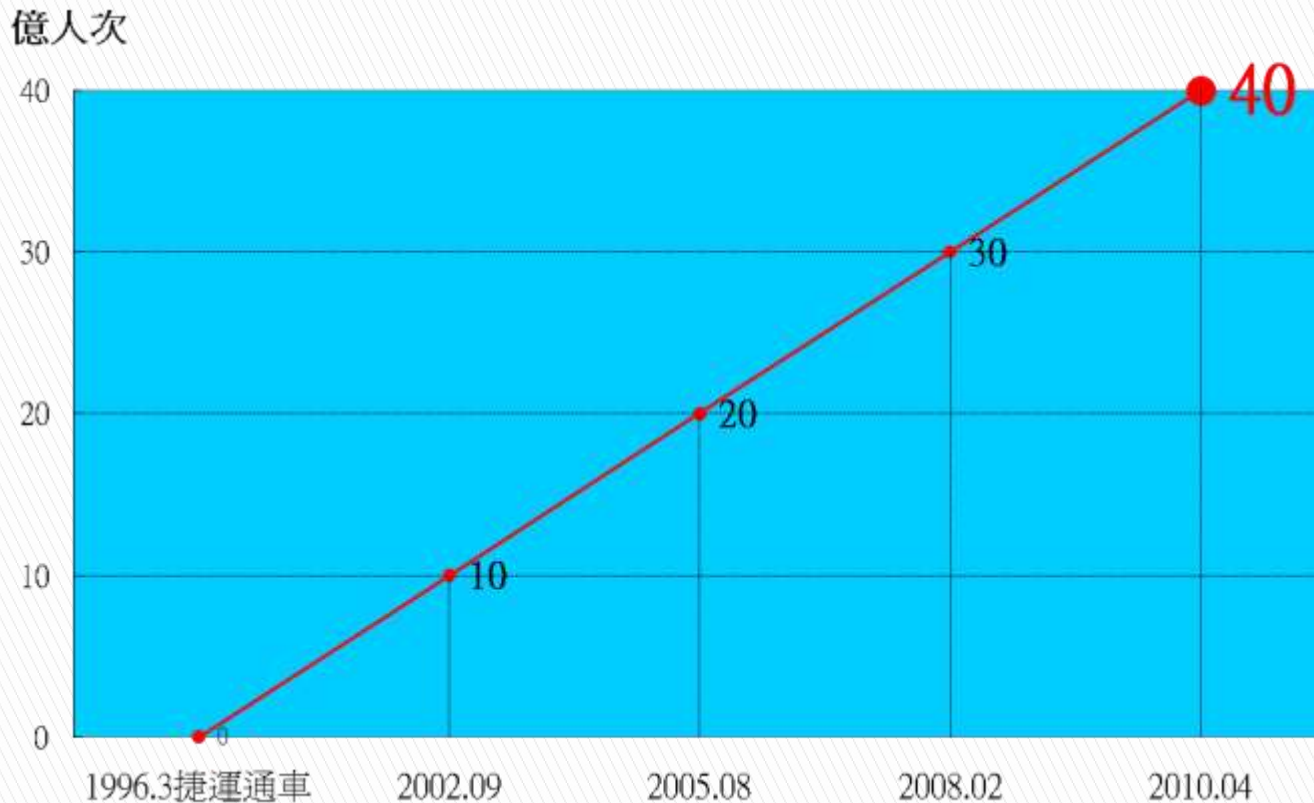


Average daily volume

平均日運量

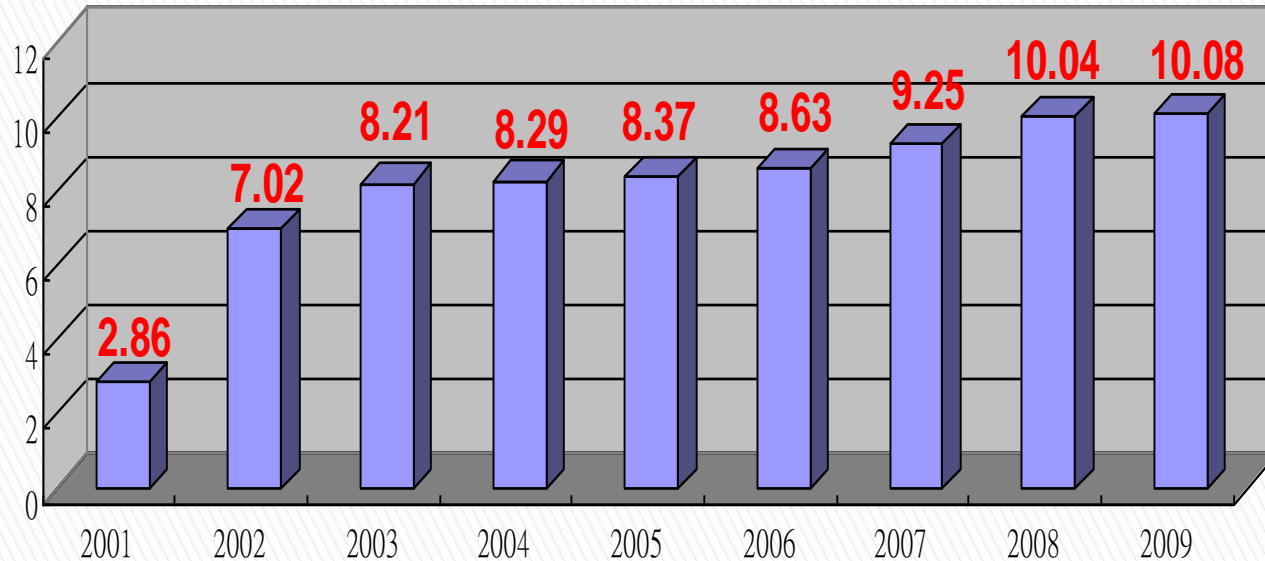


Accumulated MRT volume overtake 4 billions



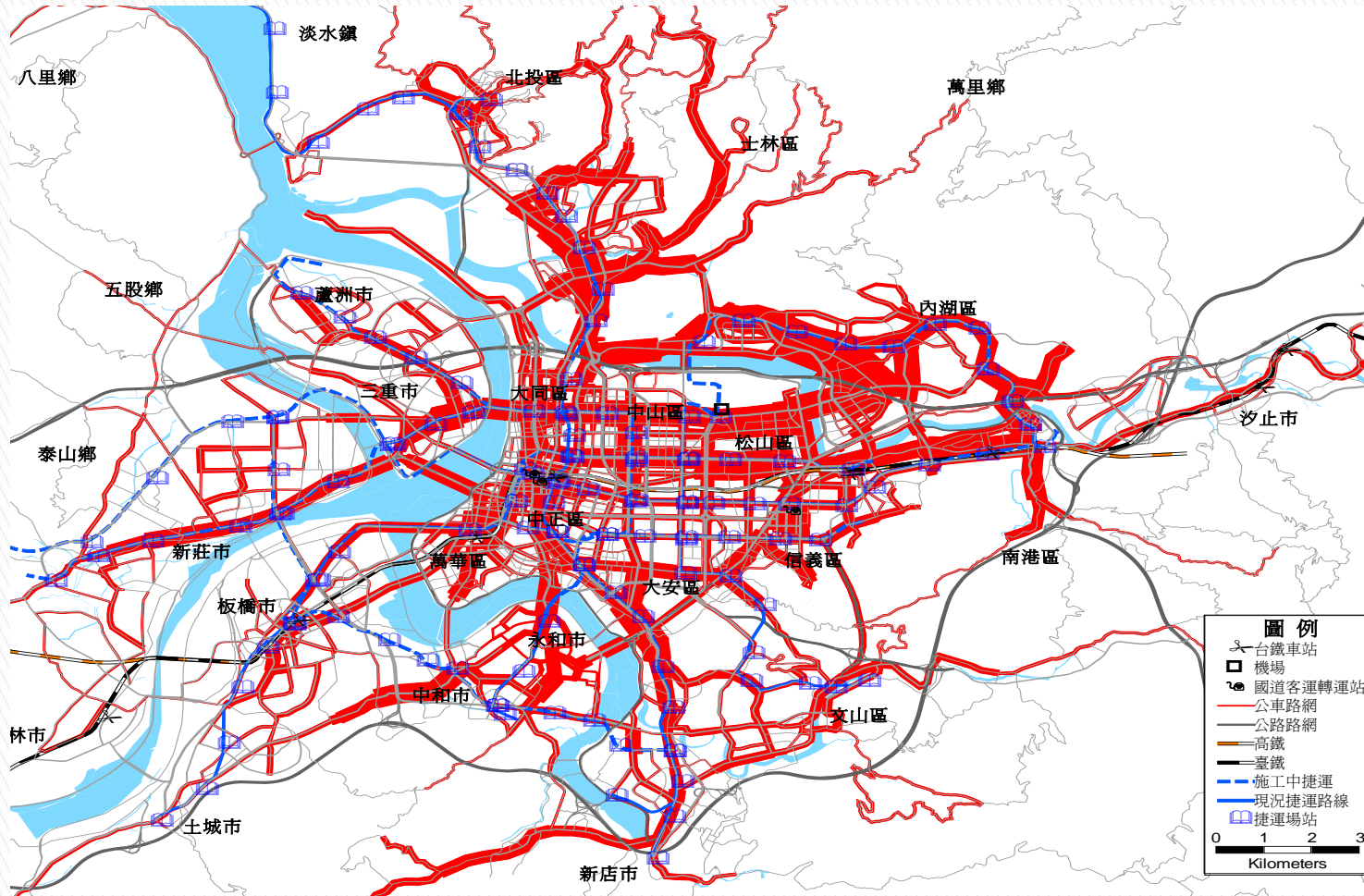
Accumulated volume overtake 4 billions on Apr. 22, 2010.
Compared with first billions after 6 years in operation in 1996, it only takes 2.17 years to achieve 4 billions.

Two-way Transfer Policy



- ▶ When passengers transfer from metro to bus or bus to metro within one hour, they will receive a discount on the metro or bus fare depending on the types of tickets they are using.
- ▶ The subsidy is pay by TRTC since 2002.

Taipei Bus system



Taipei Joint Bus System Network

Barrier-Free Public Transport Service

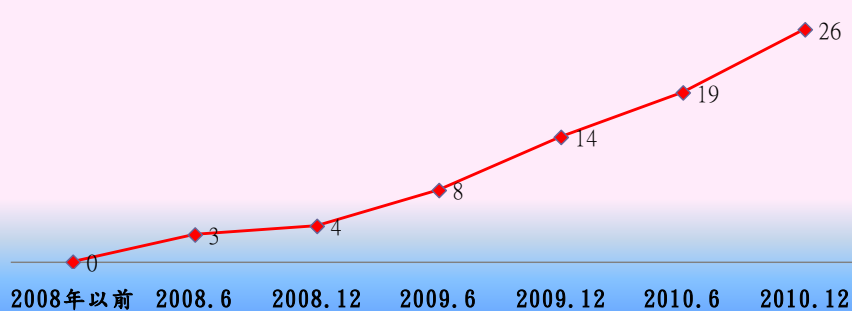
- ▶ For giving a barrier-free public transport environment, we implement several strategies
 - Low Floor Bus
 - Senior Citizen & Handicapped Taxi Service



Accumulated Low Floor Bus Routes and Vehicles

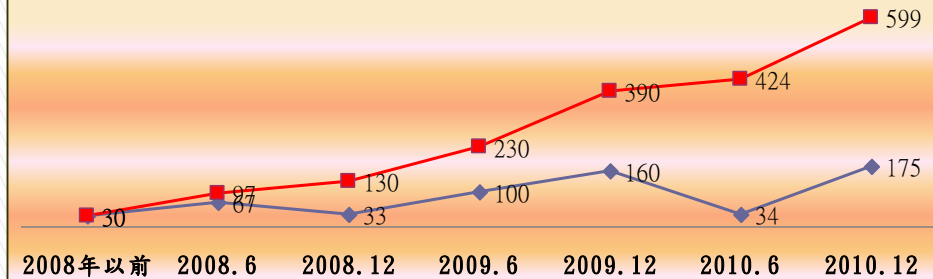
臺北市低底盤公車路線數

◆ 累積低底盤公車路線數



臺北市低底盤公車數量

◆ 引進低底盤公車數 ◆ 累積低底盤公車數



Accumulated Low Floor Bus Routes

Accumulated Low Floor Bus Vehicles

- 602 low floor buses commercial service on Feb, 2011

Diesel and Electric Hybrid & Low floor Bus



- Commercial service since Feb, 2010
- 60 buses in Taipei international Flora Expo



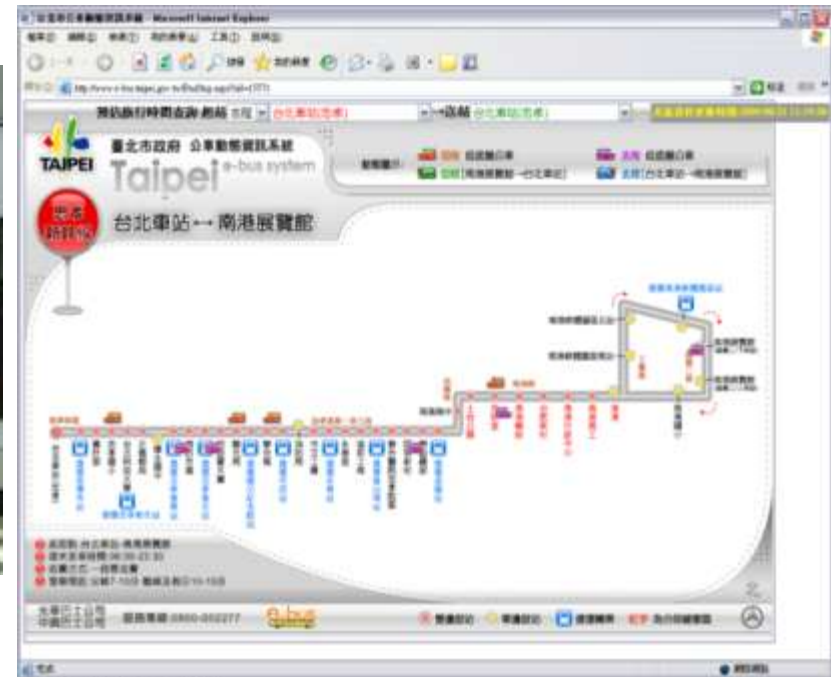
City Mini Bus

Route	Service date	Cumulate volume
1	2007.07	146,636
2	2007.11	139,904
3	2007.12	7,530
5	2007.11	209,818
6	2007.12	479,076
7	2007.11	2,296,182
8	2008.05	84,360
9	2008.08	51,794
11	2009.03	124,175
10	2009.08	58,297
12	2010.08	8,421

- Short distance
- Shuttle
- Last-mile service

E-bus system

- ▶ Bus Arrival Information System
- ▶ In-vehicle LED Stop Display



Bus hub for inter city



Taxi

- ▶ Who Are Eligible
 - Senior or handicapped citizens with EasyCard issued by the Taipei City Government.
- ▶ The Government subsidy those citizens fixed amount fare per month.
- ▶ How to use service
 - Call
 - Convenience Stores

Senior Citizen &
Handicapped Taxi Service



YouBike (Public bike)(1)

Share

11 bike rentals
500 bikes

Deference

Automation

Courtesy

Labor management
free



**Pick-up and return car allow at
different rental**

Pilot Program Area




編號	站名	車位數	Kiosk
1	捷運市政府站 (服務中心)	180	2
2	捷運國父紀念館站	38	1
3	台北市政府	40	1
4	市民廣場	60	1
5	興雅國中	60	1
6	紐約紐約綠園道	80	1
7	信義廣場(Taipei101)	80	1
8	世貿三館	60	1
9	世貿一館C出口	40	1
10	臺北市災害應變中心	54	1
11	三張犁	26	1
總計		718	12

YouBike (Public bike) (3)



Prospects and Plans

- ▶ Increase public transit usage
 - ▶ Low floor and hybrid buses
 - ▶ E-Bus system accuracy
 - ▶ Bus routes renovation
- 

**Thanks For Your
Attention!**

Q&A

