

Promotional Plan for a Disaster-Prepared City

1) Introduction

(1) Objective

Prevention an earthquake disaster and the spread of damage at the time of the occurrence of an earthquake

(2) Applicable area

23 wards and 7 cities in the Tama area
(wooden built-up area)

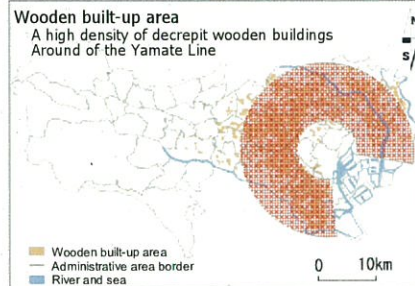
(3) Formation and planning period

The master plan From FY2003 to FY 2025 (23 years)

The improvement program..... From FY2003 to FY 2015 (13 years)

2) Tokyo's Issues in Terms of Disaster Prevention

(1) Actual State of the Urban Area in Tokyo



(2) Formation of Wooden Built-up Areas



Views inside wooden built-up areas (examples)

(3) Characteristics of wooden built-up areas

Wooden built-up areas

Many decrepit houses ➔ Need to be rebuilt

• Many of the residents are elderly.

• Some plots are very small.

• The criteria governing road are not met. ... etc.



It is difficult to promote reconstruction.

(3) Characteristics of wooden built-up areas

Great Hanshin-Awaji Earthquake (Jan.17,1995 M.7,3)
 •Missing/dead 6,437 •Housing 249,180 houses

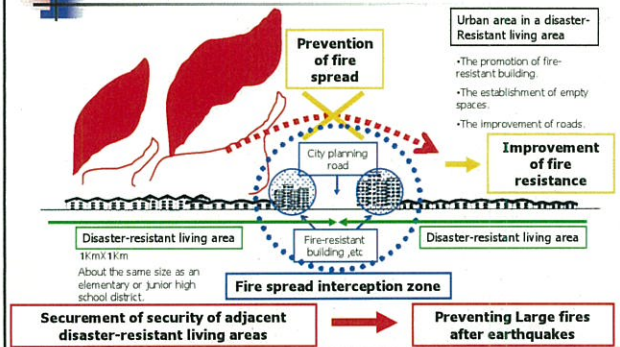


Building collapse and fire in an urban area at the time of the occurrence of the Great Hanshin-Awaji Earthquake

3) Basic Concept for the Construction of a Disaster-Prepared City

- (1) Securement of disaster-resistant urban structures
- (2) Improvement of local capability for disaster prevention
- (3) Improvement of the quake resistance and fire resistance of individual buildings

Concept of disaster-resistant living areas with a fire spread interception zone



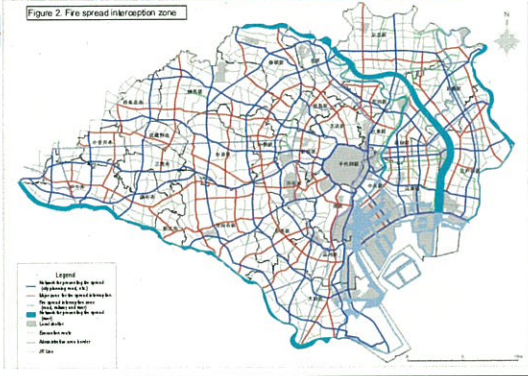
4) Policy on Fire Spread Interception Zones

- (1) Classification of fire spread interception zones
 - Network for preventing fire spread •••➤ main highways ,wide river
 - Major fire spread interception zone •••••➤ highways
 - General fire spread interception zone •••➤ streets and rivers other than those above ,railroads
- (2) Goal for the provision of fire spread interception zones

The formation rate of city planning roads that •••➤ 95% (By 2015) serve as a network for preventing fire spread
- (3) Measures for the provision of fire spread interception zones
 - improvement of roads
 - construction of fire-resistant buildings along the roads
 - regulations and promotional measures (ex. Fire regulation etc.)

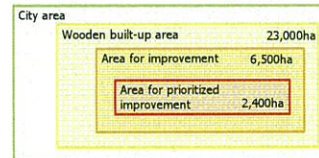
Fire spread interception zone

Figure 2. Fire spread interception zone



5) Policy on Urban Improvement

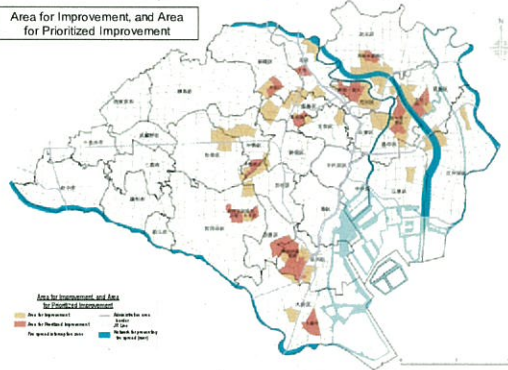
(1) Prioritized improvement of dangerous urban areas



(2) Measures for urban improvement

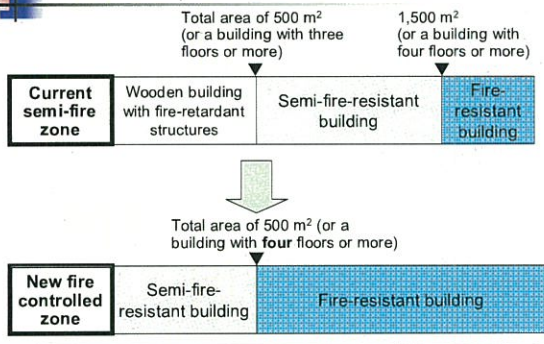
- Area for improvement
 - regulations and promotional measures • restoration-oriented projects
- Area for prioritized improvement
 - those above, and • infrastructure improvement

Area for Improvement, and Area for Prioritized Improvement

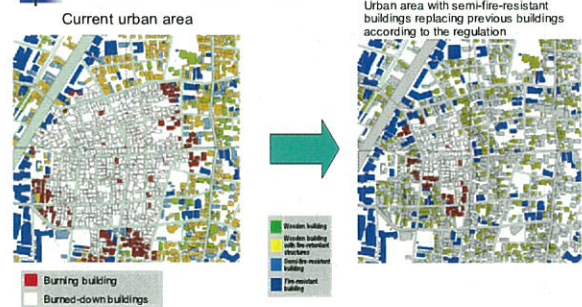


Fire Regulations under the Tokyo Building Safety Ordinance

The Content of the System



Effects of measures



Designated areas

- Sumida Ward, Nakano Ward, Arakawa Ward, Suginami Ward, Itabashi Ward, Mitaka City, Shinagawa Ward, Adachi Ward, Meguro Ward, Kita Ward, Setagaya Ward and Toshima Ward
- Approximately 2,932 ha designated in all the above areas (as of June 2008)