

Investment Opportunities for Urban Waterfront Development of Taipei City



Reporter: Hsing Shih Tan

Research officer of Taipei City government



Outline

- **Facts of Taipei City**
 - **Vision, Goals and Actions**
 - **Investment Opportunities**
-

Location



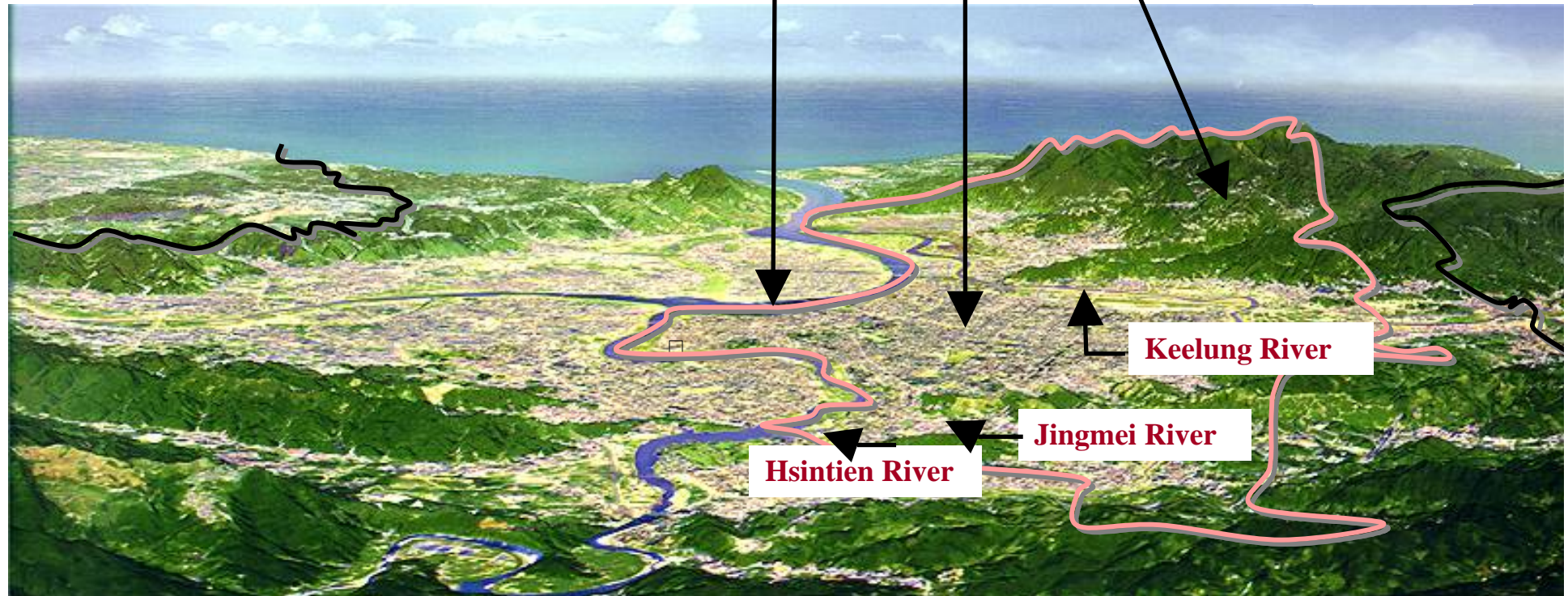
Geographic Features

- Basin surrounded by rivers and mountains
- Area: 272 km²
- 4 Major Rivers
- 5 Major Mountain Ranges

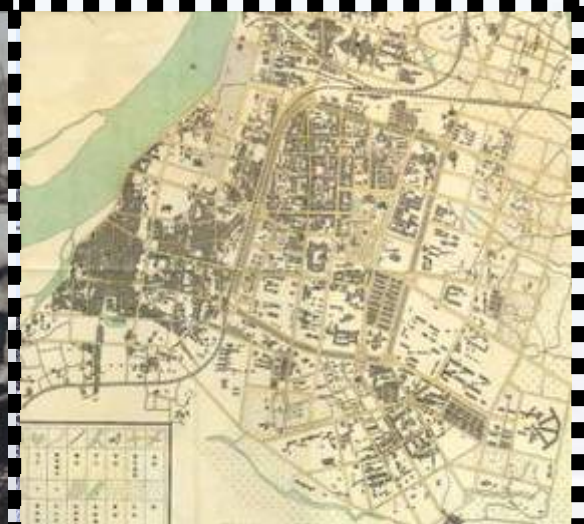
Yangmingshan National Park

Taipei City Centre

Tamshui River



Taipei – a Port Village at Beginning



1625~1895



1895~1945



1945~1967



present ~

Taipei Today



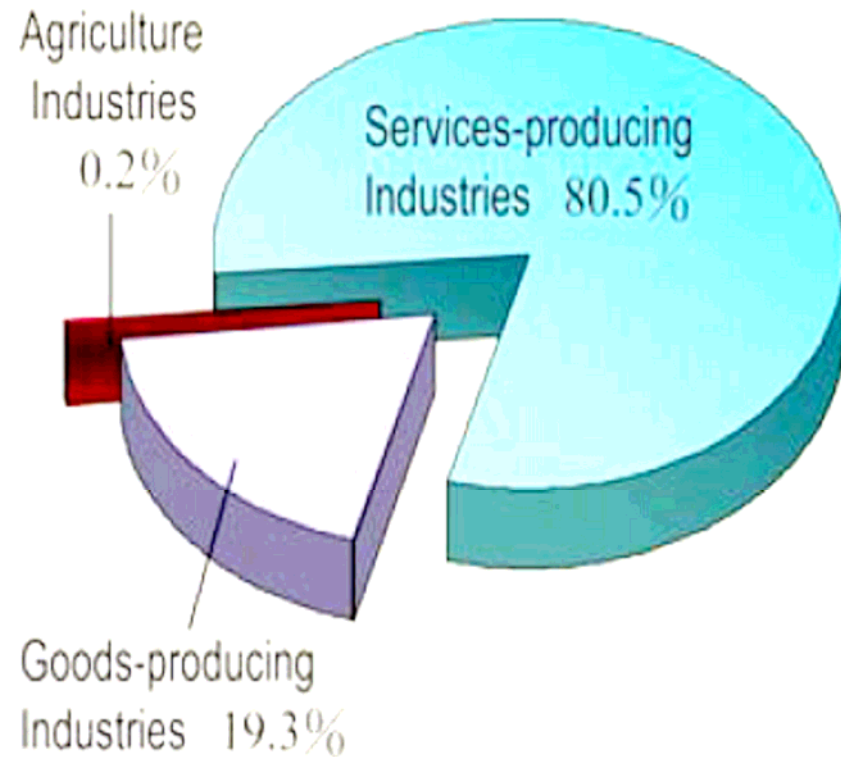
Taipei 101 and Xin-yi District



- **Population: 2.62 million**
- **Population density : 9,684 persons/km²**
- **Unemployment rate: 3.9%**

Structure of Employed Population

Employed Population : 1,135,000 persons



Competitive Advantages

2006	Recognized as the world's largest municipal Wi-Fi city by JiWire, the Wi-Fi hotspot authority
	"Intelligent Community Awards 2006" by Intelligent Community Forum (ICF)
2004	Ranked as Asia's 3rd City and World's 11th in 2004, Global Competitiveness Report, published by the World Economic Forum, Switzerland
2002	"Global IT Excellence Award, Public Sector" by World Information Technology & Service Alliance (WITSA)

An aerial, high-angle view of a city grid. A central area is highlighted with a semi-transparent, light blue overlay, indicating a specific development or project zone. Within this zone, several tall, modern skyscrapers are visible, along with green spaces and infrastructure. The rest of the city is shown in a faded, semi-transparent style, suggesting a focus on the highlighted area. The sky is bright and hazy, with some clouds visible in the distance.

Vision, Goals and Actions

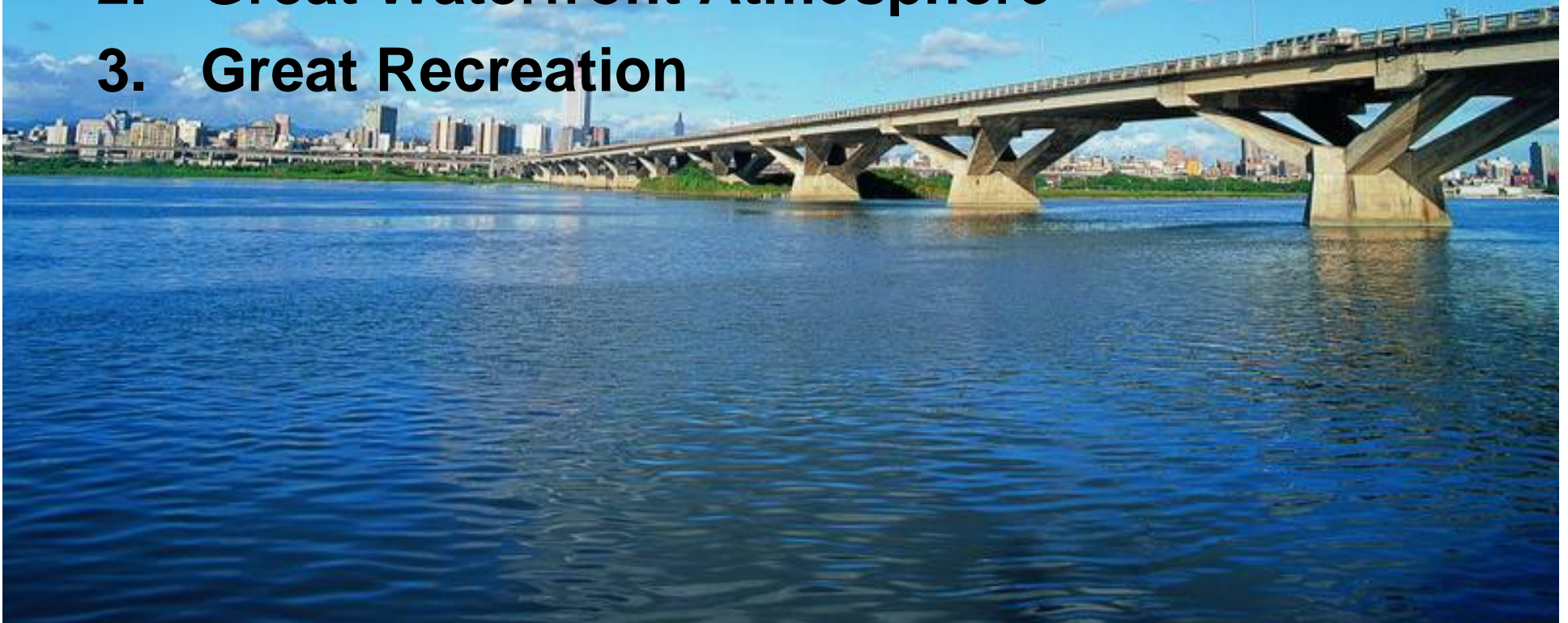
Vision of Taipei



Goals of Waterfront Revitalisation

The 3 Great Goals:

1. Great Water Quality
2. Great Waterfront Atmosphere
3. Great Recreation



Great Water Quality

Strategy: River Deodorized by 2011

Actions:

- Analyze contamination source and flow quantity
- Expand sewer system
- Improve sewage treatment plants
- Evaluate construction of gravel-packed reactors, artificial wetland and Interceptor/trap station
- Control significant individual sources of pollution
- Investigate the river sedimentation and clean up the river
- Protect the ecological system



Gravel-Packed Reactors

Great Waterfront Atmosphere

Strategy: Attractive waterfront atmosphere

Actions:

- Waterfront redevelopment
- Green belts along rivers
- Guidelines for waterfront development
- Bridge and waterfront lighting



Great Recreation

Strategy: Diverse recreational and leisure activities

Actions:

- Fulfill amenities
- Riverside green belts with bike paths
- River cruises
- Regular waterfront events



An aerial, high-angle view of a city grid. A specific area, likely a waterfront, is highlighted with a blue and green color scheme, indicating a development project. The rest of the city is shown in a muted, greyish-green tone. The text is overlaid on the central part of the image.

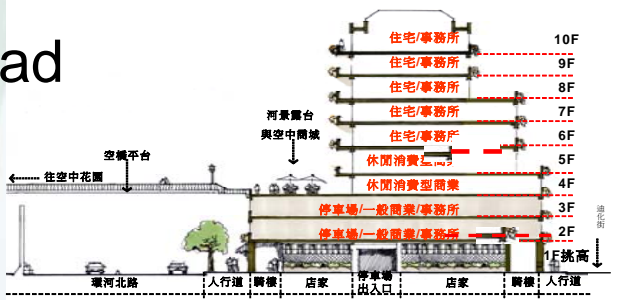
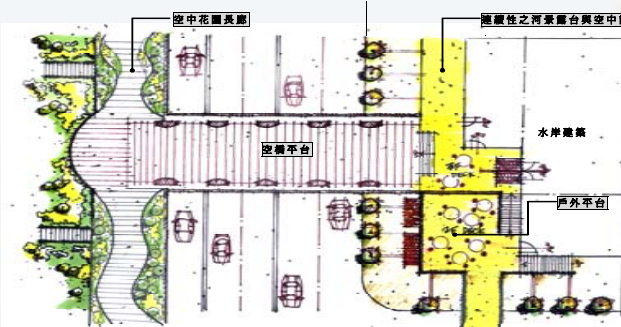
Investment Opportunities for Urban waterfront Development

Waterfront Redevelopment Projects

Sky Garden Design for Riverside North Road

Length: 4km

Total Cost : \$21.2 Million USD



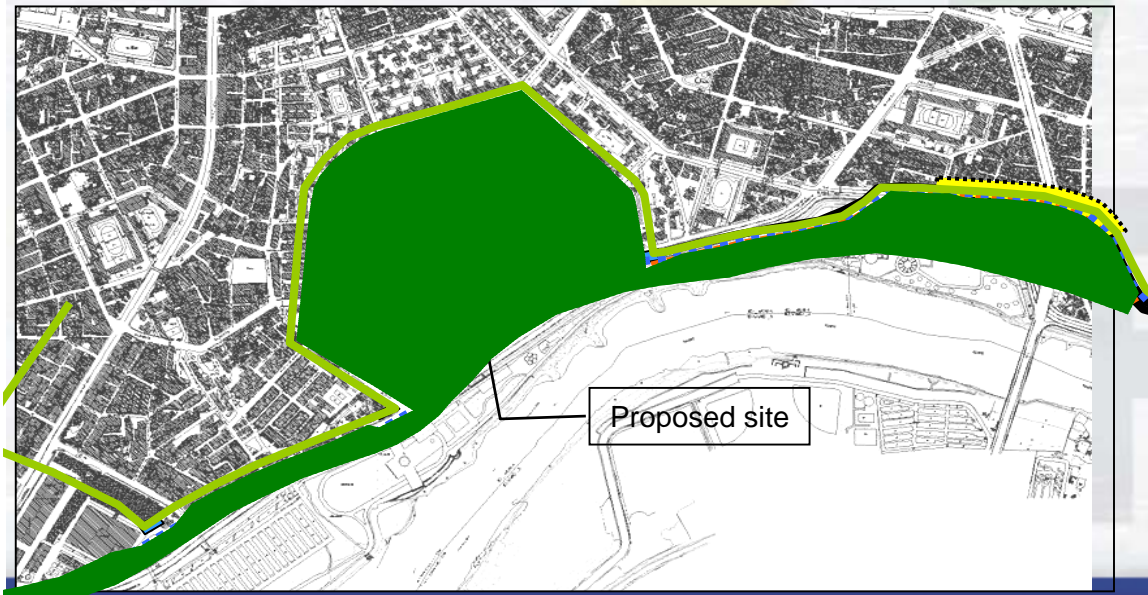
Green Dike for Riverside South Road

Length :450 m

Total Construction Cost: NT \$850 Million
(Approx. \$27.8 Million USD)

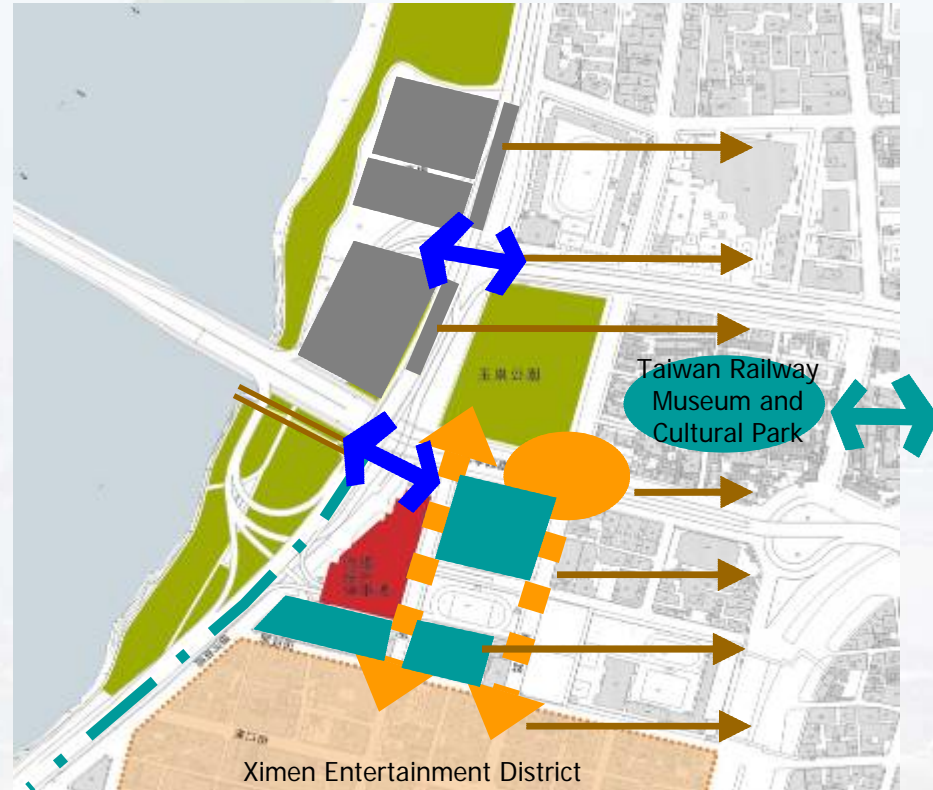


Design of the Green Dike at the Youth Park



Redevelopment of Luoyang Parking Structure and Improvement of Surroundings

- Significant waterfront landmark
- Connection node for the future cross-river construction
- Mixed-use (commercial, recreational and office building) development
- Locus of urban renewal
- Site area: 10,684 m²
- Cost: NT \$15 Billion (\$450 million USD)



Encourage Private Investment

- **“Taipei Municipal Self - Governance Ordinance for Encouraging Private Investment ”**
- **Incentives** — tax exemption
 - financing benefits
 - subsidies for occupational training
 - low-cost municipal real estate
- **Public support on private investment**
- **Friendly environment and people**

Thank You
and
We sincerely
welcome your visit
to Taipei!

