



The Roles of Bangkok Metropolitan Administration towards the Global Warming Issue

**Administrative Management Training
28-30 January 2007
Tokyo, Japan**



Bangkok Area : 1,568 Sq.Km.





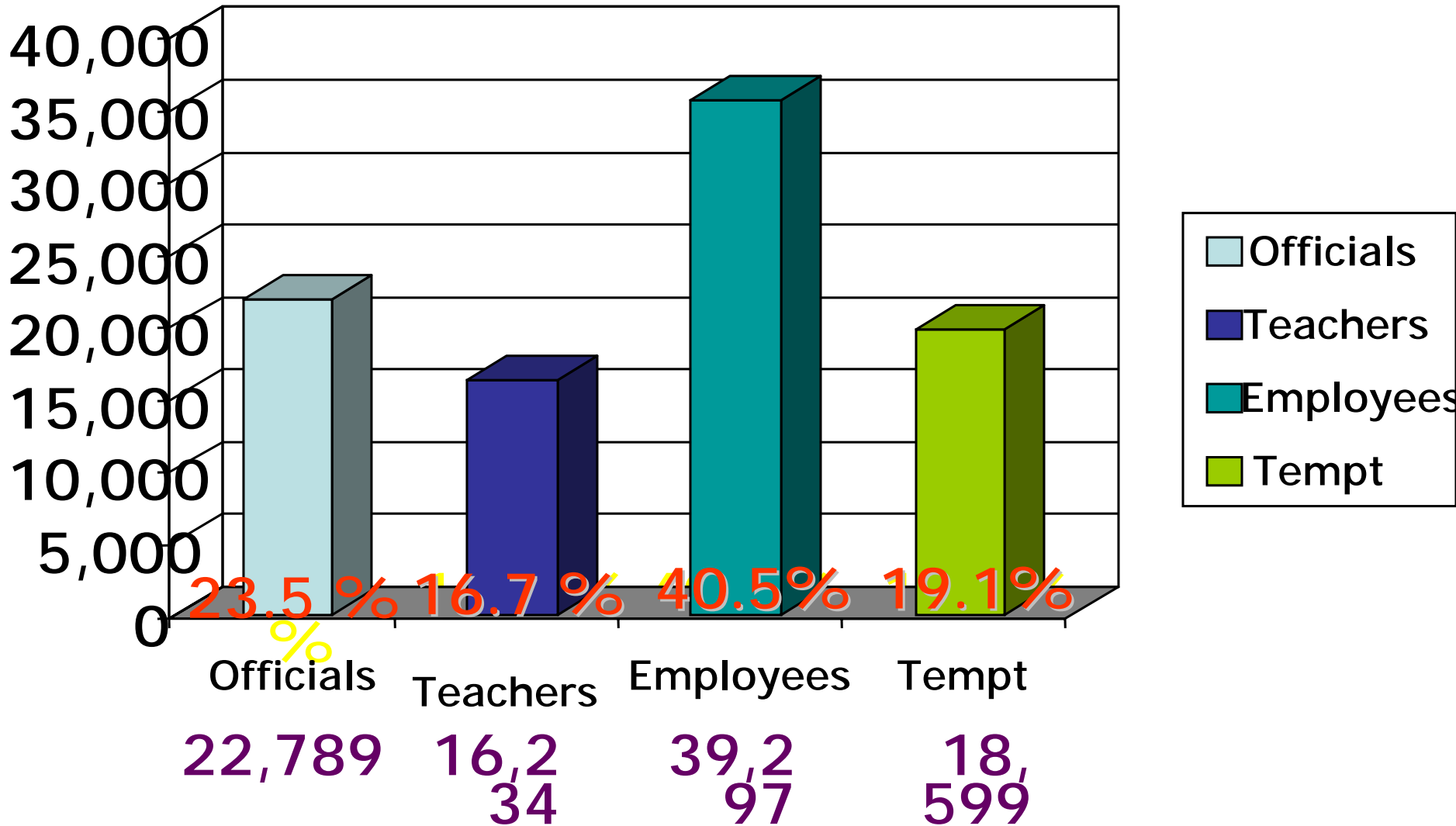
Statistics of Bangkok: 2006

Population	: 5.69	Million
Male	: 2.72	Million
Female	: 2.97	Million
Number of houses	: 2.15	Million
Population Density	: 3,631 persons/Sq. km.	



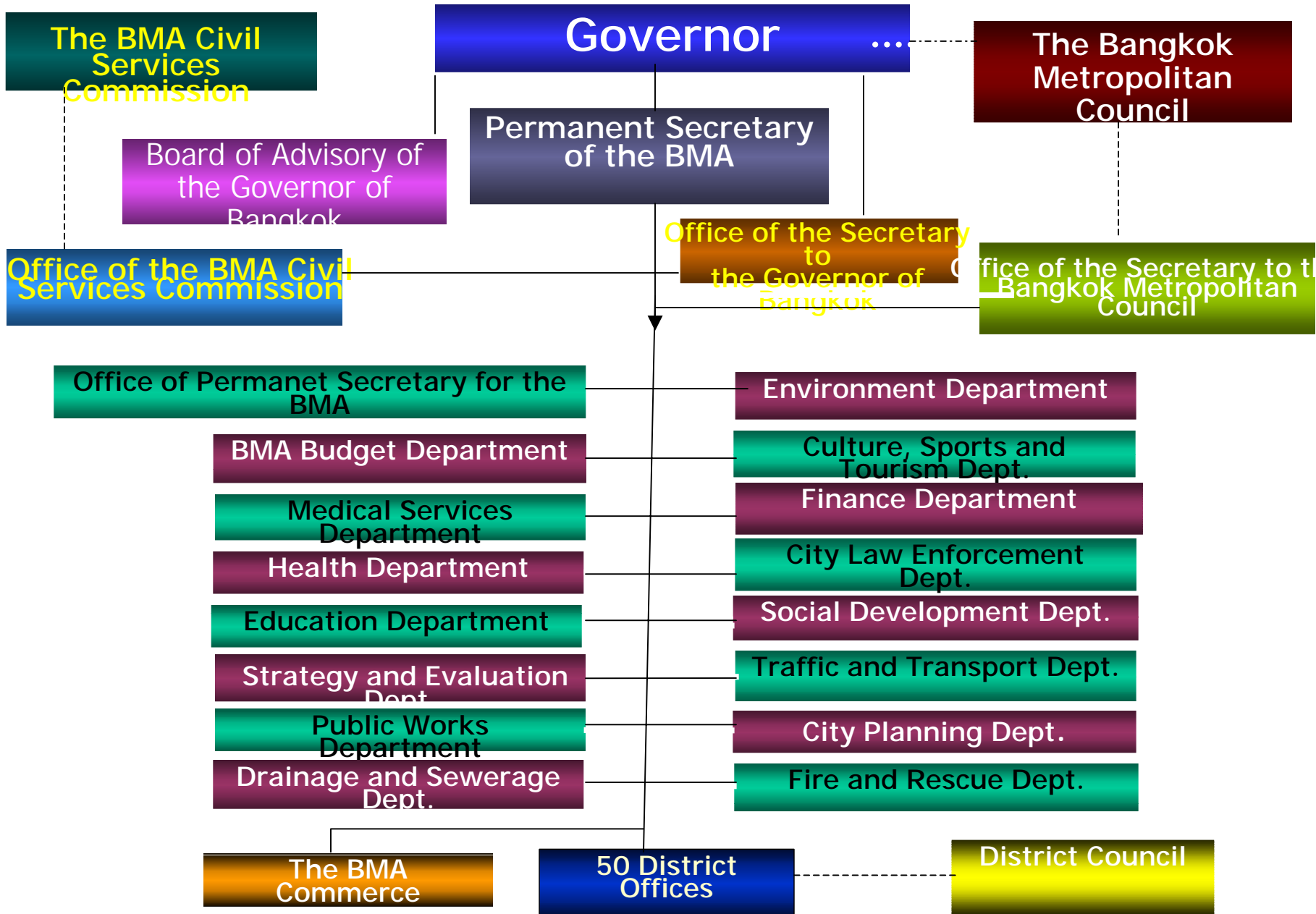
Work Force: 2006

Total 93,273





Organization Chart of the Bangkok Metropolitan Administration



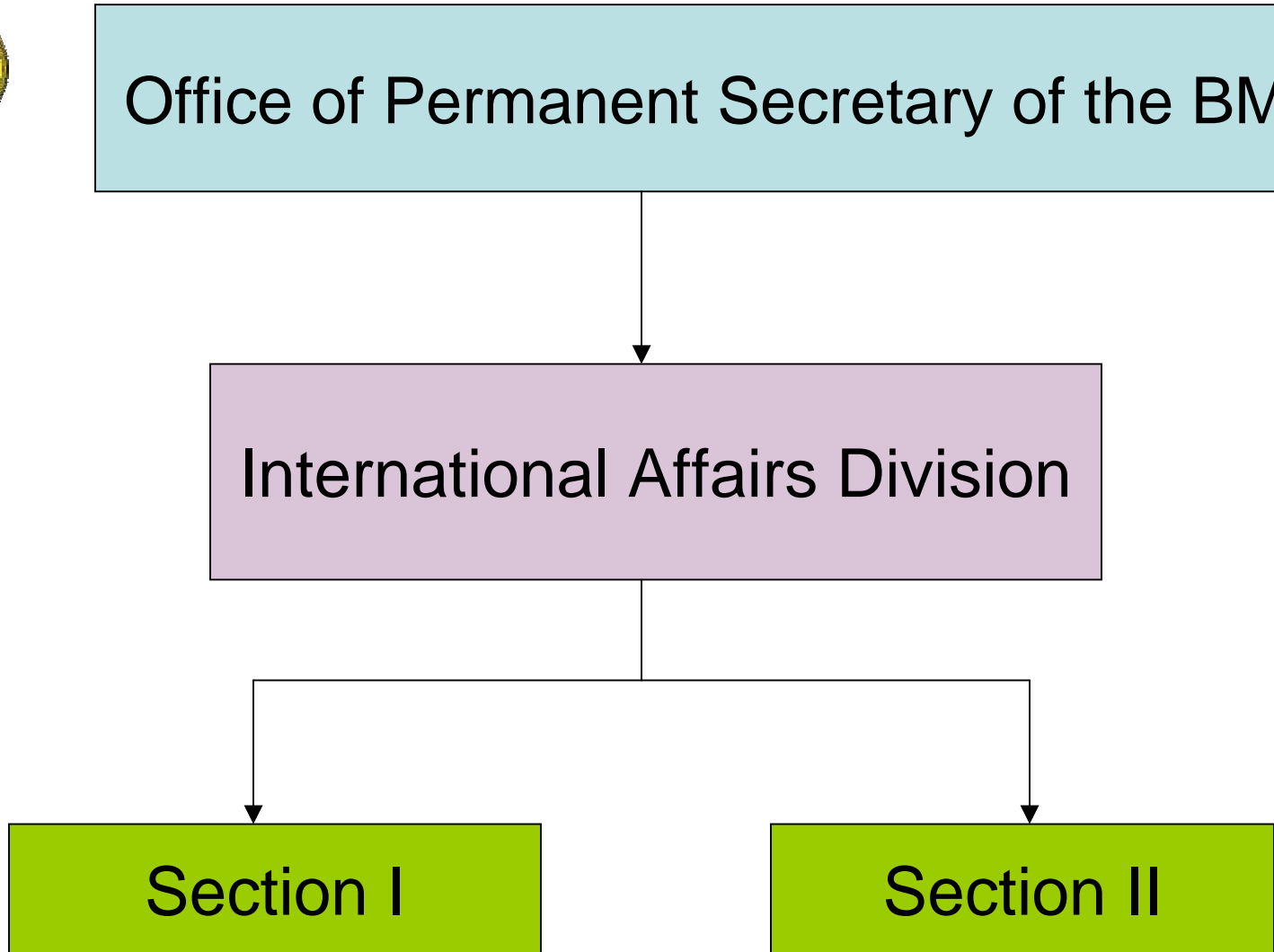


Office of Permanent Secretary of the BMA

International Affairs Division

Section I

Section II





Sister Cities Relations





Relationship of Non Governmental Organizations

- **Metropolis**
- **The Regional Network of Local Authorities for the Management of Human Settlements in Asia and Pacific : CITYNET**
- **The Asian Pacific City Summit**
- **Council of Local Authorities for International Relations : CLAIR**
- **International Urban Development Association : INTA**
- **International Council for Local Environment Initiatives : ICLEI**
- **The Asian Network of Major Cities : ANMC 21**



Climate Change

- **Extreme weather conditions threaten human health and productivity**
 - Spread of Vector-borne diseases such as malaria and dengue fever
 - Food Shortages in cities
- **Natural Disasters**
 - Flooding
 - Wildfires
 - Cyclones increase
 - Hurricane
 - Tsunami



Launch BMA Projects : Global Warming

- **Energy Saving**
 - Promotion of Alternative Energies
 - Solar Cell
 - Wind Power
 - New / renewable Energy
 - Bio-Diesel

- **Transportation and EcoMobility**
 - Walking
 - Cycling
 - Wheeling
 - Passenging



Launch BMA Projects : Global Warming

- **Solid Waste and Wastewater Management**
 - Home Composting
 - Waste recycling
 - Appropriate technology
- **Air Quality**
 - Plant tree
 - New Public Parks construction
 - Roof-top Garden



Thank You

